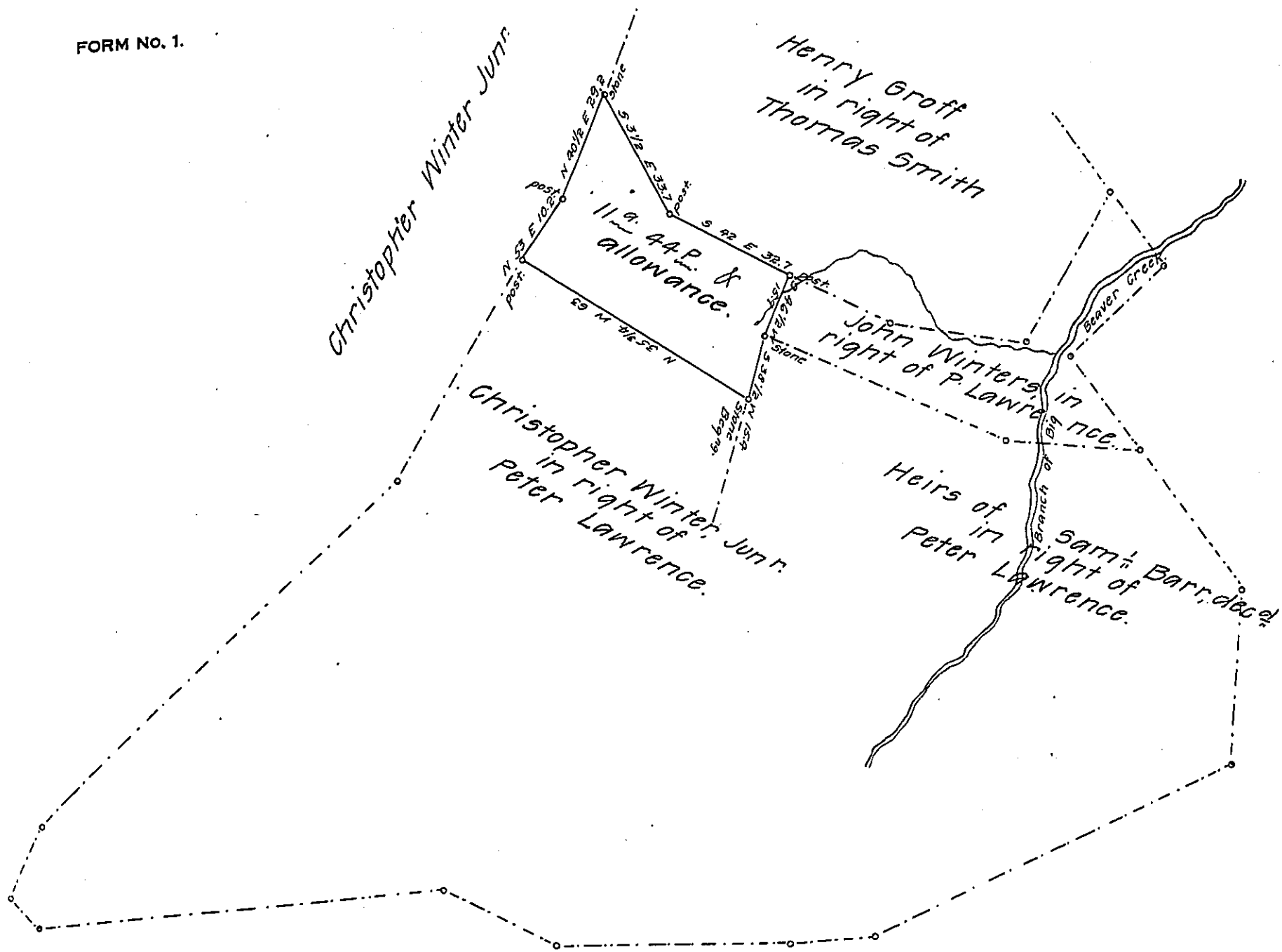


FORM NO. 1.



Draught of a piece of Land, Situate in Martick township Lancaster County, Containing eleven acres forty four perches and the allowance of 6 p Cent for roads &c. Being part of a larger tract, which was granted to Peter Lawrence, by warrant, dated the 21st day of December 1750, and containing, by original survey, 210 a. & allowance.

The above described piece of land was surveyed for Henry Groff, the 11th day of May A. D. 1819.

Examined and certified the 4th day of October, Anno Domini 1828.

By James Black, D.S.

To Gabriel Hiester Esqr.

Surveyor Genl. Pa.

IN TESTIMONY that the above is a copy of the original remaining on file in the Department of Internal Affairs of Pennsylvania, made conformably to an Act of Assembly approved the 16th day of February 1833, I have hereunto set my hand and caused the Seal of said Department to be affixed at Harrisburg, this sixteenth day of January 1908

Arday Howell
Secretary of Internal Affairs.